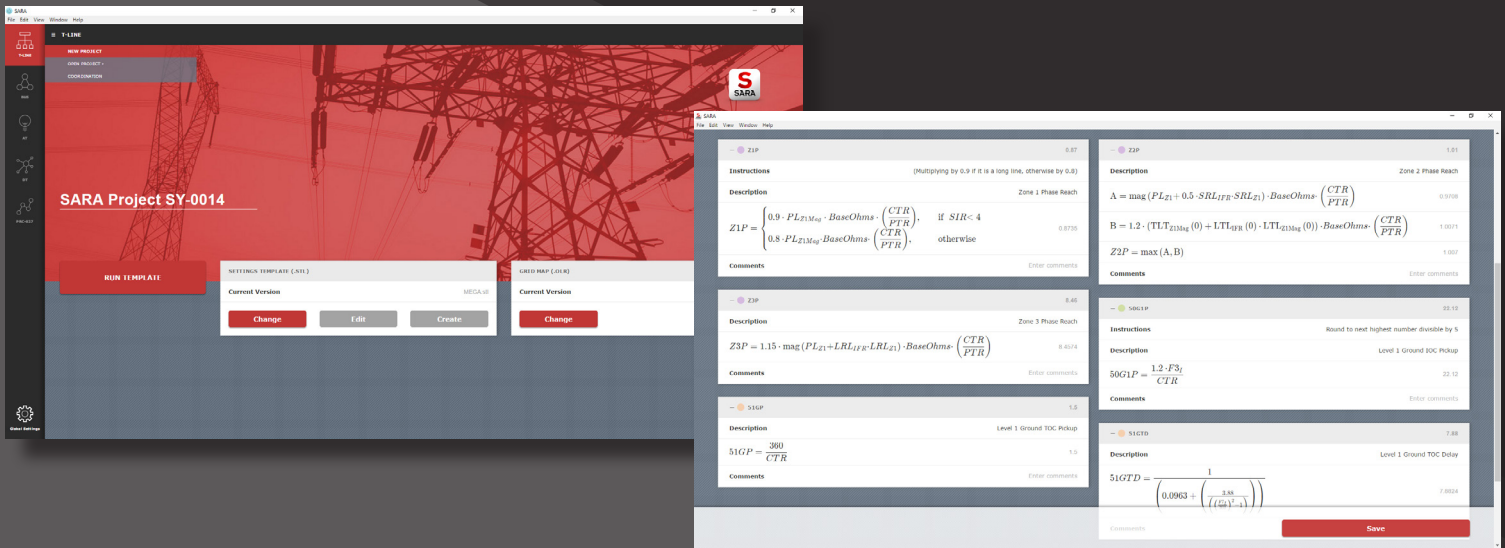




# Setting Automation Relay Assistant (SARA)

Enabling settings engineers to focus on the essence of relay settings development



**SARA** is a software tool, integrated with ASPEN, that automates transmission line relay setting creation. This innovative program uses a smart template that streamlines fault calculations and settings equations, eliminating errors due to the manual transfer of data, and ultimately producing more accurate settings.

## How SARA Works

- Creates a template to define a set of equations to represent setting philosophy
- Runs the template by bi-directionally communicating with the short circuit programs to solve setting equations
- Applies the template to any transmission line within the grid
- Automates relay coordination for distance and overcurrent relays

## Benefits of SARA

- Automatically performs data collection and fault analysis
- Automates relay setting calculations
- Exports all setting calculations to a Word report
- Eliminates human error due to data transfer between separate programs
- Creates equations to verify NERC compliance for all versions of PRC-O23, PRC-O26, and PRC-O27

